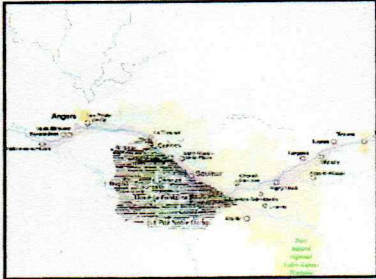
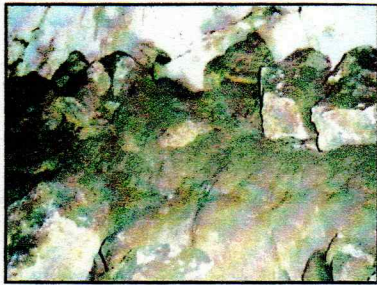
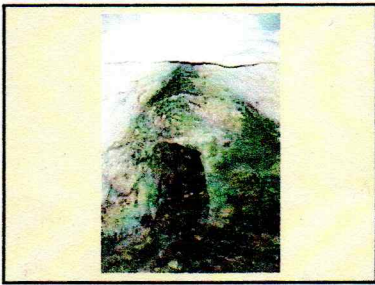
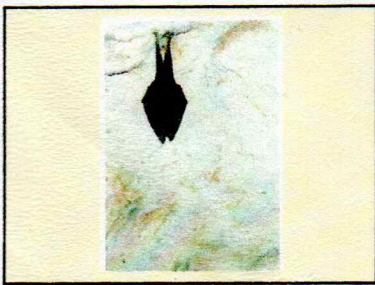
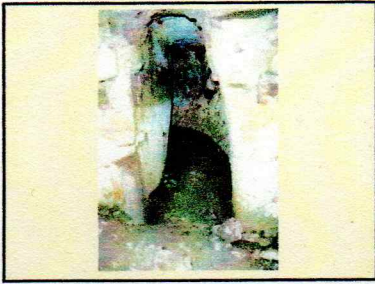
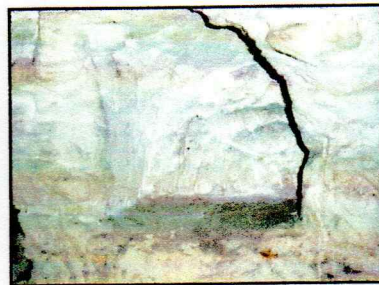
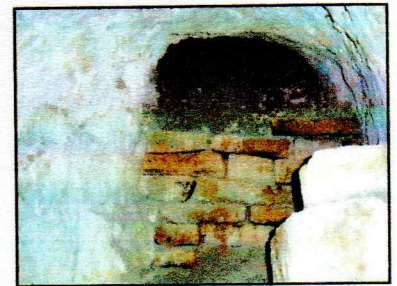
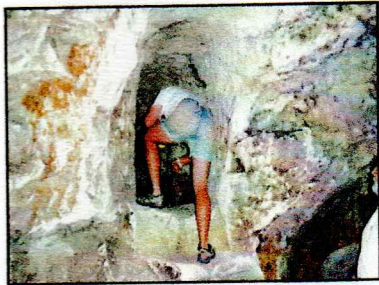


Les souterrains de Denezé-sous-Doué



Souterrain refuge de Villeneuve





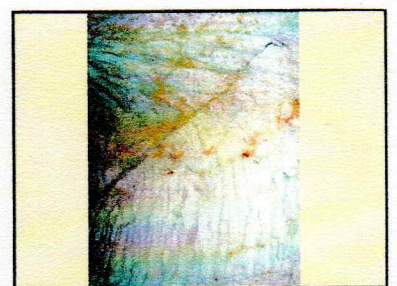
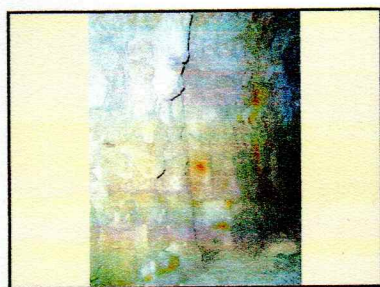
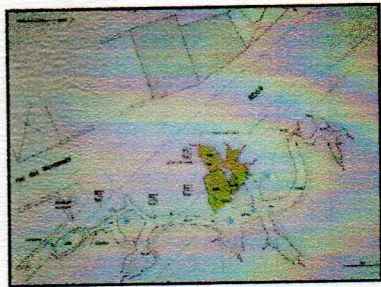
DEPARTEMENT DE MAINE-ET-LOIRE  
DIRECTION DES ROUTES ET DES DÉPLACEMENTS  
BUREAU DE GÉOLOGIE ET DES CARRIÈRES SOUTERRAINES

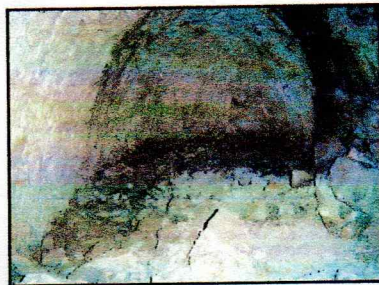
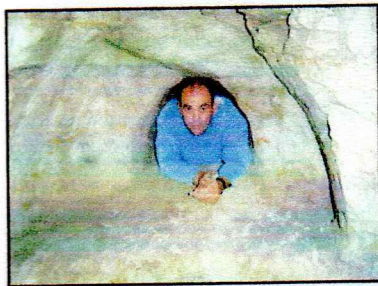
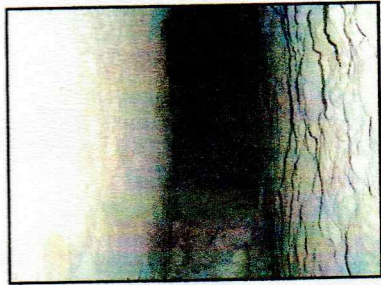
DRD

COMMUNE DE DENEZE-SOUS-DOUE

Cavité n°12111 située sous la R.D.69  
Découverte d'un souterrain aménagé

PLAN TOPOGRAPHIQUE  
Echelle : 1/100





Souterrain refuge  
de la Maison Rouge à la Carte

